

SH300 Lock Hardware



Application

Compatible with Mul-T-Lock 4-way locks and MPL210 lock series.

Options

- Complete set
- Fixed or moving handle
- Suitable for door thickness of 45-70 mm
- Interchangeable CC (center to center) distance – 85/90 mm

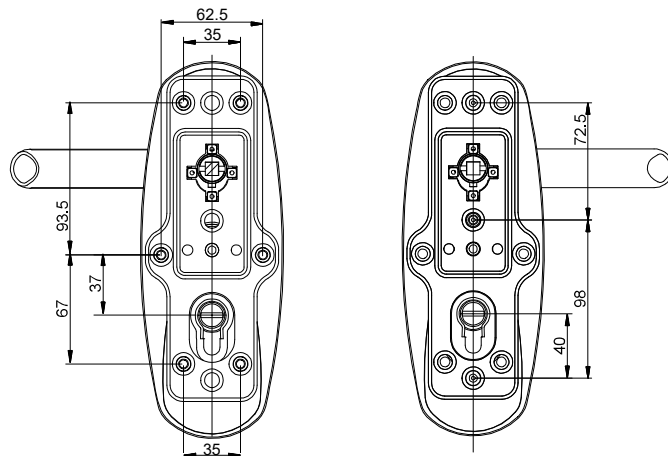
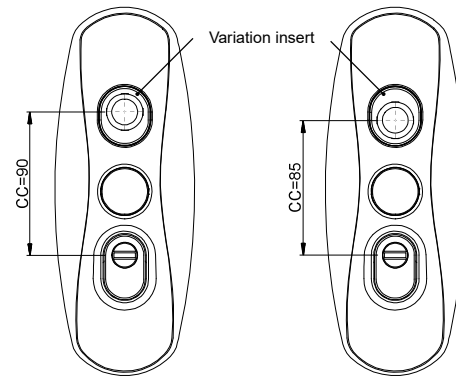
Materials

Cylinder protector: stainless steel.
Body with hardened inserts for high drilling resistance.
Base plate: carbon steel with high corrosion resistance plating.
Cover plates: brass.

Available finishes

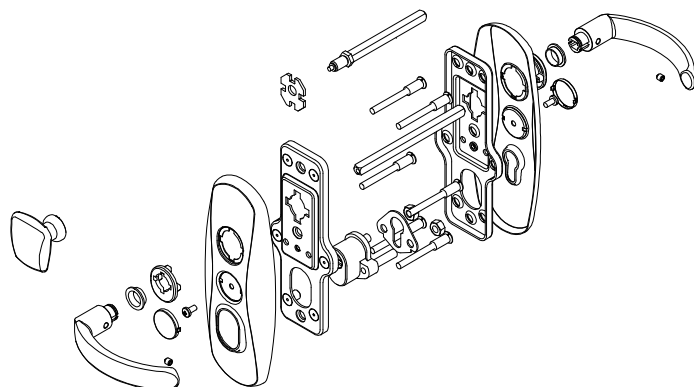
Gold - PVD, nickel chrome, nickel satin.

Variation insert is adjustable for both 85 or 90 mm CC.



Template for 4-way lock

Template for MPL210 series



The Mul-T-Lock name, the musclemann logo, in the field of locking products, and any other name, mark or logo used by Mul-T-Lock and marked by ® or ™ sign, are registered/pending trademarks of Mul-T-Lock Ltd. ©2019 Mul-T-Lock Technologies Ltd. 98100878-I

www.mul-t-lock.com