

Multipoint Lock 352R



Application

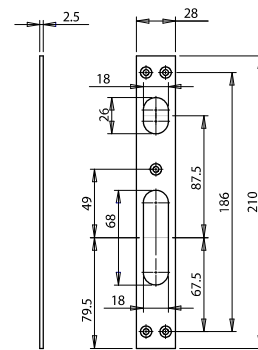
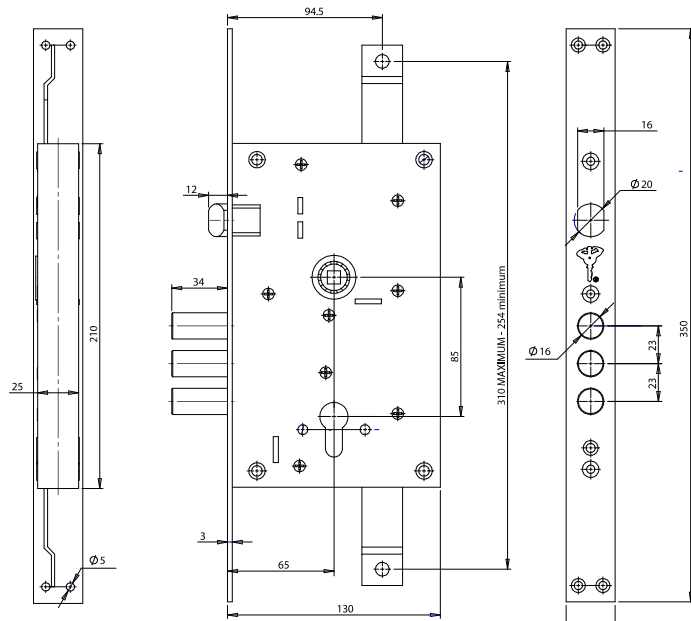
Suitable for steel door type to provide enhanced - 3 way multi-bolt locking. Compatible with Mul-T-Lock® Euro profile cam cylinder.

Features

- Left or Right hand application
- Operating 5 bolts
- Double turn mechanism

Specifications

- Bolt throw 17/34mm for One/Two key turns
- Triple steel round bolt 16" mm
- Standard hardware (Backset 65mm, CC 85mm)
- Chrome nickel plated bolts and front plate
- Robust galvanized steel case
- Handle spindle with ball-bearing mechanism for high-traffic doors



FRAME STRIKE PLATE



www.mul-t-lock.com