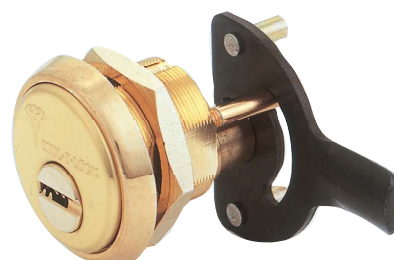


Multi-Bolt Locking for Cabinet



Application

Multipoint locking for cabinets.

Operation

90° cam rotation by operating key.
Directly linked to cam and bolts.
Adjustable for clockwise or counter-clockwise operation.

Options

Solid spacer ring, available in different thicknesses.

Materials

Body, plug and ring: brass

Cam: steel

Bolts & support: zinc-plated steel

Pins: nickel silver and stainless steel

Standard finishes

Antique brass, antique bronze, nickel chrome, shiny brass

Cylinder mechanism

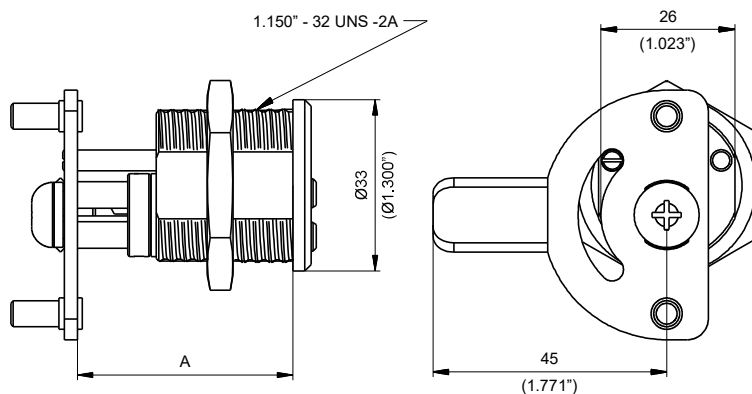
Mul-T-Lock's unique high precision pin tumbler system.

Keys

Reversible nickel silver key with plastic key head and colored insert for identification. Also available in all nickel silver.

Cylinder options

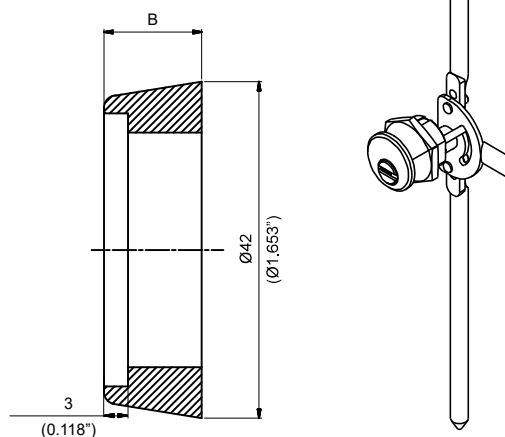
- Classic, Interactive[®]+, MT5[®] platforms
- Keyed different, keyed alike
- Master keyed
- '3 IN 1' (changeable combination)



	mm	Inch	
A	37	1.45	4
	40	1.57	5

Spacer ring (standard mortise ring)

	mm	Inch
B	5.7	0.22
	8.9	0.35
	12.2	0.48
	15.5	0.61



The Mul-T-Lock name, the musclemen logo, in the field of locking products, and any other name, mark or logo used by Mul-T-Lock and marked by ® or ™ sign, are registered/pending trademarks of Mul-T-Lock Ltd. ©2019 Mul-T-Lock Technologies Ltd. 98100878-I

www.mul-t-lock.com