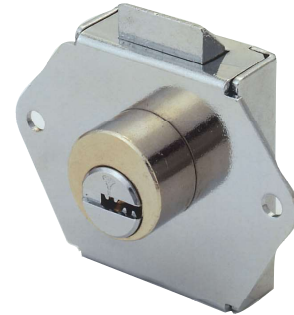


# Drawer Latch Lock



## Application

Securing drawers and small cabinets.

## Operation

- 45° rotation by operating key
- Slam locking mechanism

## Options

Two latch sizes available.

## Materials

Body and plug: brass

Lock case: steel

Latch: cast zinc alloy

Pins: nickel silver and stainless steel

## Standard finishes

Brass, nickel satin, shiny brass

## Cylinder mechanism

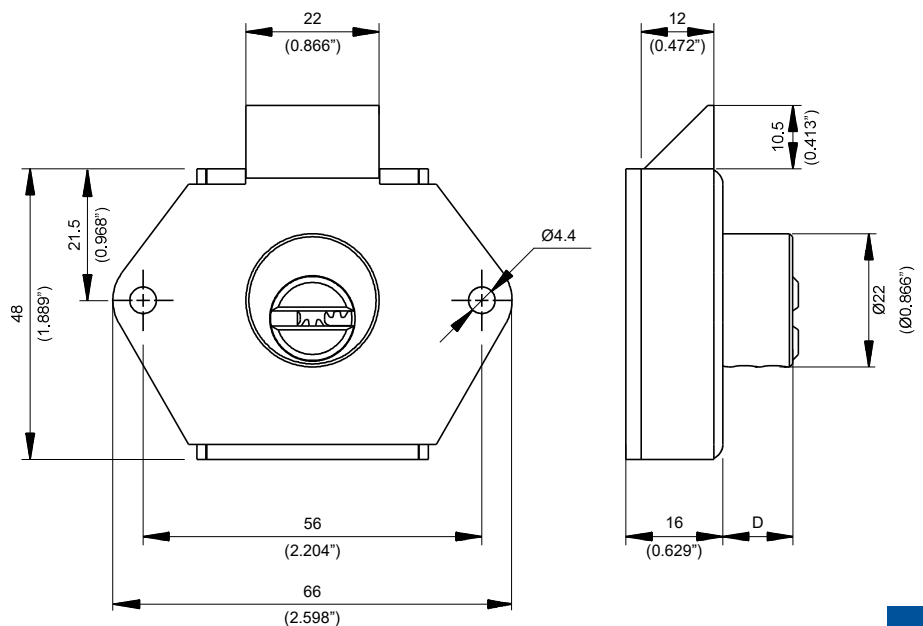
Mul-T-Lock's unique high precision pin tumbler system.

## Keys

Reversible nickel silver key with plastic key head and colored insert for identification. Also available in all nickel silver.

## Cylinder options

- Classic, Interactive<sup>®</sup>+, MT5<sup>®</sup> platforms
- Keyed different, keyed alike
- Master keyed



Type		D	Chambers
Regular	mm	11.5	4
	Inch	0.452	
Heavy duty	mm	21.5	5
	Inch	0.846	



The Mul-T-Lock name, the musclemen logo, in the field of locking products, and any other name, mark or logo used by Mul-T-Lock and marked by ® or ™ sign, are registered/pending trademarks of Mul-T-Lock Ltd. ©2019 Mul-T-Lock Technologies Ltd. 98100878-I

[www.mul-t-lock.com](http://www.mul-t-lock.com)